



**Surgical Solutions USA**  
Regenerative Product  
**Catalog**

**Surgical**  
*Solutions* **USA**

# RESORBABLE COLLAGEN MEMBRANES (BOVINE)

## CYTOPLAST™ RTM Collagen

Resorption time of 26 -38 weeks



**RTM1520**  
\$185  
15mm x 20mm  
Membranes per box: 2

**RTM2030**  
\$230  
20mm x 30mm  
Membranes per box: 2

**RTM3040**  
\$330  
30mm x 40mm  
Membranes per box: 2

## HelimEND™ & HelimEND™ ADVANCED (\*\*identical to Biomend® and Biomend Extend®)

HelimEND is absorbed in 4-8 weeks whilst HelimEND ADVANCED is absorbed in 18 weeks



MX62-203	Helimend 15 x 20mm	ea	\$74.50
MX62-204	Helimend 20 x 30mm	ea	\$94.00
MX62-205	Helimend 30 x 40mm	ea	\$148.00
MX62-206	Helimend Advanced 15 x 20mm	ea	\$87.00
MX62-207	Helimend Advanced 20 x 30mm	ea	\$106.00
MX62-208	Helimend Advanced 30x 40mm	ea	\$153.50

\*\*Biomend® and Biomend Extend® are registered trademarks of ZIMMER Dental

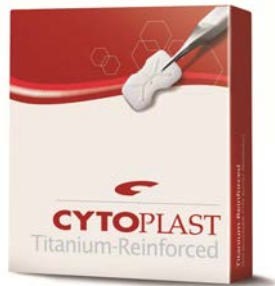
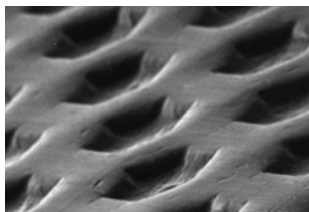
Call to Order T 877.266.3360 • F 877.719.2071

**Surgical**  
Solutions USA

# NON-RESORBABLE MEMBRANES

## THE ORIGINAL, PATENTED, HIGH-DENSITY PTFE MEMBRANE

- Non-resorbable - won't resorb prematurely, clinician dictates healing time
- 100% Dense (non-expanded) PTFE; pore size less than 0.3 µm - impervious to bacteria
- Purposely leave the membrane exposed - less surgical time, preservation of soft tissue architecture and keratinized mucosa
- Soft tissue attached, but doesn't grow through the membrane - exposed membrane allows for non-surgical removal
- Hexagonal dimples increase surface area - textured surface helps prevent retraction



The patented Regentex™ surface helps stabilize the membrane, and the soft tissue flap.

## CYTOPLAST™ Ti-250 Anterior Narrow

12mm x 24mm

Ti250ANL-1	Ti150ANL-1	\$110
Ti250ANL-2	Ti150ANL-2	\$200

Ideal for narrow single-tooth extraction sites, especially where one or more bony walls are missing.



## CYTOPLAST™ Ti-250 Anterior Singles

14mm x 24mm

Ti250AS-1	Ti150ANL-1	\$140
Ti250AS-2	Ti150ANL-2	\$250

Ideal size and shape for single-tooth extraction sites, especially where one or more bony walls are missing.



## CYTOPLAST™ Ti-250 Posterior Singles

20mm x 25mm

Ti250PS-1	Ti150PS-1	\$180
Ti250PS-2	Ti150PS-2	\$325

Designed for grafting posterior extraction sites and limited ridge augmentation.



## CYTOPLAST™ Ti-250 Posterior Large

25mm x 30mm

Ti250PL-1	Ti150PL-1	\$200
Ti250PL-2	Ti150PL-2	\$365

Designed for grafting large bony defects, including ridge augmentation.



## CYTOPLAST™ Ti-250 Anterior/Post Perio

13mm x 19mm

Ti250AP-1	Ti150AP-1	\$120
Ti250AP-2	Ti150AP-2	\$220

Designed to fit periodontal defects in the anterior



## CYTOPLAST™ Ti-250 Posterior Large T2

25mm x 36mm

<b>NEW</b> Ti250PST2-1	Ti150PST2-1	\$215
Ti250PST2-2	Ti150PST2-2	\$390

Designed for grafting posterior extraction sites and limited ridge augmentation.



## CYTOPLAST™ Ti-250 Buccal

17mm x 25mm

Ti250BL-1	Ti150BL-1	\$180
Ti250BL-2	Ti150BL-2	\$325

Designed for grafting large buccal defects



## CYTOPLAST™ Ti-250 XL / Ti-250 XLK

30mm x 40mm

Ti250XL-1	Ti150XL-1	\$250
Ti250XL-2	Ti150XL-2	\$450

Designed for grafting very large bony defects especially ridge augmentation



## CYTOPLAST® TXT-200/Singles

12mm x 24mm

TXT1224-1	\$50
TXT1224 (10/box)	\$400



25mm x 30mm

TXT2530-1 (1/box)	\$80
TXT2530 (4/box)	\$280



\*\*\* Products shown are NOT actual size.

# RIGHT-ANGLED DRIVER

Right Angled Driver # RTAD

\$400



- ▶ With 7 x Torque Settings ranging from 10 - 35 Ncm
- ▶ Makes it easy to place posterior screws in either mandible or maxilla
- ▶ Can be driven either manually or through an e-type connection to implant motor

**7 Torque Settings: 10, 15, 20, 25, 30, 32 & 35 Ncm**

Easy access to tightening screw on second molars.  
Saves you time and adds an additional safety factor.



Adjustable Torque Converter # TORQ

\$450

## DRIVER TIPS

IMPLANT SYSTEM	0.350 HCT	0.040 HSM	0.048 HNT	0.050 HTT	0.052 HS	0.062 HSL	0.080 HJ	0.080 HUL	0.080 HFD	STAR ITI
NobelBiocare	•		•						•	
Keystone Dental	•				•	•				
Steri-Oss				•						
Straumann/ITI										•
Friadent	•	•	•							
Impla-Med			•						•	
Implant Innovation /3i	•		•						•	
Imtec				•						
Implant Direct				•			•	•		
Zimmer				•						
BioHorizons	•			•						
Astra				•						
Camlog				•						
Innova				•						
PRICE	\$39	\$39	\$39	\$39	\$39	\$39	\$39	\$39	\$39	\$39

# BONE FIXATION

Membrane Fixation Kit # PFMK20	\$997
Bone Tenting Kit # PFTK12	\$997
Bone Fixation Kit # PFBK12	\$1100

## Features and Benefits

- Ideal for both membrane Fixation (Screw Tacks) as well as Block Fixation (Self-Tapping Screws/Tenting Screws)
- No pilot hole required
- Made of high-grade titanium alloy to increase strength and prevent breakage
- Low-profile head
- Biocompatible
- CT scan and MRI compatible
- Cruciform Driver Blade fits securely into the head of the screw



### 1.5mm Self-Drilling Tenting Screws

### 1.5mm Self-Tapping Fixation Screws

### 1.5mm Self-Drilling Fixation Screws

8mm # PFB8-5 \$150 (5/pkg)  
 10mm # PFB10-5 \$150 (5/pkg)  
 12mm # PFB12-5 \$150 (5/pkg)  
 14mm # PFB14-5 \$150 (5/pkg)



3mm # PFT3-5 \$150 (5/pkg)  
 4mm # PFT4-5 \$150 (5/pkg)  
 5mm # PFT5-5 \$150 (5/pkg)



3mm # PFT3-5 \$150 (5/pkg)



# OSTEO-MESH™ TM-300 (TITANIUM MESH)

## Benefits of Nitride Coating

- High coating density with no pores to hold contaminants
- Will not stain or corrode
- Withstands acids, bases, solvents and high temperatures
- Outstanding wear resistance

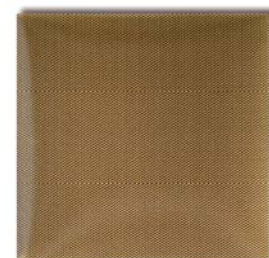
## Features

- Ultra-thin; 0.2mm thick - easier to get primary closure
- 0.3mm pore size - contains most graft materials
- Safe, highly inert, non-reactive, non-stick nitride coating - improves tissue release upon removal
- May be repeatedly sterilized by autoclave - unused portions are not wasted

45mm x 45mm

TM4545 \$100 ea

(provided non-sterile)



# COLLAGEN WOUND DRESSINGS



MX62-200 \$155/box

HeliTAPE® (10 units/box)

Indications for use:

- ⇒ Protect the wound site
- ⇒ Repair of Schneiderian Membrane
- ⇒ Controls bleeding due to hemostatic nature of Collagen



MX62-202 \$110/box

HeliPLUG® (10units/box)

Indications for use:

- ⇒ Aids in the closure of extraction sites
- ⇒ Control bleeding in extraction sites
- ⇒ Controls bleeding in biopsy sites



MX62-201 \$135/box

HeliCOTE® (10 units/box)

Indications for use:

- ⇒ Palatal donor sites
- ⇒ Mucosal flaps

# MINERALIZED (ALLOGRAFT) PARTICULATE

*The Gold Standard in Oral Bone Regenerative Therapy*

- When clinician requires a graft with the hydroxyapatite component of autologous bone
- Applicable in cases where a scaffold and longer resorption is required
- Can be used alone or with mixture of autogenous bone in order to increase the osteoinductive properties of the graft
- Completely remodels to patients own bone



Description	Unit	Part no.	Price
<b>Cort-Can Allograft 250 -1000<math>\mu</math></b> (smaller particles)	0.5cc	I-301	\$62.00
	1.0cc	I-302	\$80.00
	2.5cc	I-304	\$172.00
	5cc	I-305	\$280.00
<b>Cort-Canc Allograft 500 -1000<math>\mu</math></b>	0.5cc	I-310	\$62.00
	1.0cc	I-311	\$80.00
	2.5cc	I-315	\$172.00
	5cc	I-316	\$280.00

# CYTOPLAST® PTFE SUTURE

## COMMON APPLICATIONS

- ⇒ Bone grafting procedures
- ⇒ Guided tissue regeneration
- ⇒ Implant surgery
- ⇒ Periodontal surgery
- ⇒ Ridge augmentation
- ⇒ Soft tissue grafts



## Benefits

- Non-resorbable medical grade PTFE
- Monofilament construction eliminates bacterial wicking
- Biologically inert & chemically non-reactive
- Not subject to weakening by tissue enzymes
- Excellent soft tissue response
- Soft; increased patient comfort
- Great handling, knot-tying & knot-holding characteristics

### CS051819

New 300 series stainless steel needle - especially for dental implant and bone grafting procedures.

**Size: USP 3-0**

**Needle: 19 mm 3/8 Circle Reverse Cutting**

12 per box

\$100

### CS0418

19 mm reverse cutting needle, which is popular for procedures where a longer needle is desired.

**Size: USP 2-0**

**Needle: 19 mm 3/8 Circle Reverse Cutting**

12 per box

\$100

### CS0518

Most popular size especially for dental implant and bone grafting procedures.

**Size: USP 3-0**

**Needle: 16 mm 3/8 Circle Reverse Cutting**

12 per box

\$100

### CS0618 RC

Most popular of the smaller CS-06 sutures, 16 mm reverse cutting needle. Often used for dental implant and bone grafting procedures.

**Size: USP 4-0**

**Needle: 16 mm 3/8 Circle Reverse Cutting**

12 per box

\$100

### CS0618 PERIO

13 mm taper point needle. Often used on soft tissue grafts and suturing of delicate tissues that require an atraumatic needle.

**Size: USP 4-0**

**Needle: 13 mm 1/2 Circle Taper Point**

12 per box

\$100

### CS0618 PREM

Offers over 50% longer cutting edges, giving needles a more slender, defined shape that greatly decreases the force applied to the needle during surgery.

**Size: USP 4-0**

**Needle: 13 mm 3/8 Circle Premium Reverse Cutting**

12 per box

\$120

\*\*\* Products shown are NOT actual size.