

Powered vs Manual Periosteal Elevator?



*Surgical
Solutions USA*

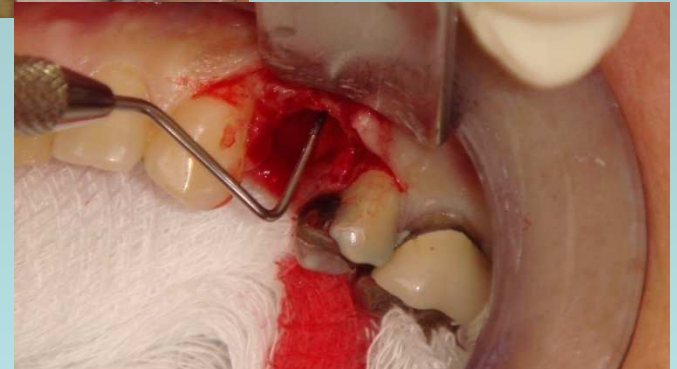
Powered vs Manual Periotome?

- Blade shaped tip
- Reciprocating motion
- Intrinsically safe
- Taps up and down via rheostat
- Severs periodontal ligament fibers
- Slightly expands socket



Indications for Use

- Severe caries
- Periodontal disease
- Trauma
- Malformed teeth
- Orthodontic indications
- Pathology
- Pre-prosthetic
- Pre-implant placement
- Immediate implant placement



*Surgical
Solutions USA*

Advantages

- Surgery can be flapless
- Minimal alveolar bone loss
- Faster than manual periostomes
- Reduced pain and swelling for patient
- Less risk of fracture of the lingual or buccal plate



Features

- Replaceable perirotome tips
- Fully autoclaveable handpiece and tips
- Release tool allows rapid tip replacement



*Surgical
Solutions USA*