

Luxator LX (Extraction Automation)

The importance of how teeth are removed is becoming increasingly important as the preservation of bone during this process directly affects the success of subsequent restorative procedures.

Setting a new standard for Trauma-free Extraction

- "The use of judicious extraction techniques for ridge preservation is necessary to preserve bone for prosthetic appliances and/or future implant placement."

(American Academy of Periodontology. Tooth Extraction During the Course of Periodontal Therapy (policy statement),

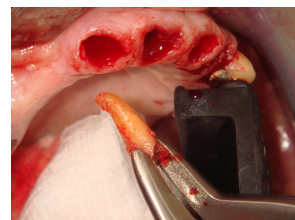
SAVE TIME

PRESERVE BONE

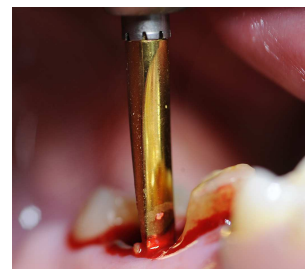
SAVE YOUR STRENGTH



Maxillary Incisor



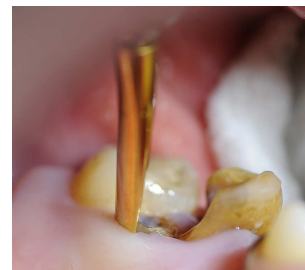
Atraumatic Extractions



Immediate implant



Vertical Fracture



Root Tip

Clinical Advantages:



506446

E - coupling



- The Luxator LX by Directa saves time on simple and surgical tooth extractions, commonly achieved by grasping a tooth with forceps and/or removing bone and sectioning the tooth. The Luxator LX allows expansion of the socket without the bone loss typical of standard extraction techniques.
- The tooth is then luxated back and forth until the socket is expanded and the tooth can be extracted while simultaneously separating the periodontal ligament fibers joining the tooth and bone. Alternately, the tooth and/or tooth roots can be removed with an elevator.
- Recently hand Periotomes and dental elevators are used with a mallet to reduce the loss of bone during extractions.
- The use of the Luxator LX or dental elevator will preclude the necessity of reflecting a flap.

Contact us at 877-266-3360, Fax 877-719-2071

www.surgicalsolutionsusa.com