



**Surgical Solutions USA**  
Regenerative Product  
Catalog

*Surgical  
Solutions USA*

# RESORBABLE COLLAGEN MEMBRANES (BOVINE)

## CYTOPLAST™ RTM Collagen

Resorption time of 26 -38 weeks



**RTM1520**

\$195

15mm x 20mm

Membranes per box: 2



**RTM2030**

\$240

20mm x 30mm

Membranes per box: 2



**RTM3040**

\$345

30mm x 40mm

Membranes per box: 2

## HelimEND™ & HelimEND™ ADVANCED (\*\*identical to Biomend® and Biomend Extend®)

HelimEND is absorbed in 4-8 weeks whilst HelimEND ADVANCED is absorbed in 18 weeks



MX62-203	Helimend 15 x 20mm	ea	\$84.50
MX62-204	Helimend 20 x30mm	ea	\$104.00
MX62-205	Helimend 30 x 40mm	ea	\$158.00
MX62-206	Helimend Advanced 15 x 20mm	ea	\$97.00
MX62-207	Helimend Advanced 20 x 30mm	ea	\$116.00
MX62-208	Helimend Advanced 30x 40mm	ea	\$163.50

\*\* (Biomend® and Biomend Extend® are registered trademarks of ZIMMER Dental

Call to Order T 877.266.3360

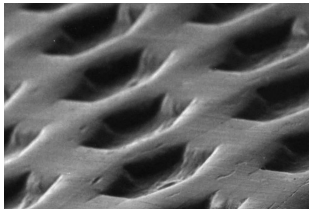
**Surgical**  
Solutions USA



# NON-RESORBABLE Ti-REINFORCED MEMBRANES

THE ORIGINAL, PATENTED, HIGH-DENSITY PTFE RE-INFORCED MEMBRANE (available in either 250µ or 150µ thickness)

- Membrane can be molded and shaped for tenting and space maintenance
- Regentex™ surface increases stability of membrane
- Dense PTFE prevents tissue ingrowth making removal of membrane easier when compared to removal of titanium mesh
- Impervious to bacteria (Data on file)
- Membranes can be trimmed to desired shape
- Titanium frame has little memory for easy placement



The patented Regentex™ surface helps stabilize the membrane, and the soft tissue flap.

## CYTOPLAST™ Ti-Reinforce Anterior Narrow

12mm x 24mm		
Ti250ANL-1	Ti150ANL-1	\$110
Ti250ANL-2	Ti150ANL-2	\$200

Ideal for narrow single-tooth extraction sites, especially where one or more bony walls are missing.

## CYTOPLAST™ Ti-Reinforce Anterior Singles

14mm x 24mm		
Ti250AS-1	Ti150ANL-1	\$140
Ti250AS-2	Ti150ANL-2	\$250

Ideal size and shape for single-tooth extraction sites, especially where one or more bony walls are missing.

## CYTOPLAST™ Ti-Reinforce Ant/Post Perio

13mm x 19mm		
Ti250PS-1	Ti150PS-1	\$180 Singles
Ti250PS-2	Ti150PS-2	\$325 Singles
Ti250PL-1	Ti150PL-1	\$200 Large
Ti250PL-2	Ti150PL-2	\$365 Large

Designed for grafting posterior extraction sites and limited ridge augmentation.

## CYTOPLAST™ Ti-Reinforce Buccal

17mm x 25mm		
Ti250BL-1	Ti150BL-1	\$180
Ti250BL-2	Ti150BL-2	\$325

Designed for grafting large buccal defects

## CYTOPLAST™ Ti-Reinforce Posterior Singles

20mm x 25mm		
Ti250PS-1	Ti150PS-1	\$180 Singles
Ti250PS-2	Ti150PS-2	\$325 Singles

## CYTOPLAST™ Ti-Reinforce Posterior Large

25mm x 30mm		
Ti250PS-1	Ti150PL-1	\$180 Singles
Ti250PS-2	Ti150PL-2	\$325 Singles

## CYTOPLAST™ Ti-Reinforce Post Large T2

25mm x 36mm		
Ti250PST2-1	Ti150PST2-1	\$215
Ti250PST2-2	Ti150PST2-2	\$390

Designed for grafting posterior extraction sites and limited ridge augmentation.

## CYTOPLAST™ Ti-Reinforce XL / XLK

30mm x 40mm		
Ti250XL-1	Ti150XL-1	\$250
Ti250XL-2	Ti150XL-2	\$450

Designed for grafting very large bony defects especially ridge augmentation

## CYTOPLAST™ Ti-Reinforce Ant Trans Crestal

38mm x 38mm		
Ti250ATC-1	Ti150ATC-1	\$230
Ti250PTC-2	Ti150PTCL-2	\$420

Designed for bony defects between teeth

## CYTOPLAST™ Ti-Reinforce Posterior Distal

38mm x 38mm		
Ti250PD-1	Ti150PD-1	\$280
Ti250PD-2	Ti150PD-2	\$500

## CYTOPLAST™ Ti-Reinforce K2

40mm x 50mm		
Ti250PD-1	Ti150PD-1	\$350
Ti250PD-2	Ti150PD-2	\$630

Designed for the largest bony defects, including augmentation

\*\*\* Products shown are NOT actual size.

# OSTEO-MESH™ TM-300 (TITANIUM MESH)

## Benefits of Nitride Coating

- High coating density with no pores to hold contaminants
- Will not stain or corrode
- Withstands acids, bases, solvents and high temperatures
- Outstanding wear resistance

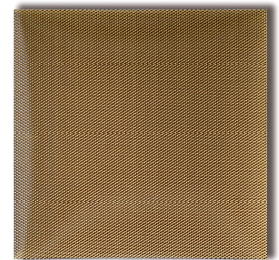
## Features

- Ultra-thin; 0.2mm thick - easier to get primary closure
- 0.3mm pore size - contains most graft materials
- Safe, highly inert, non-reactive, non-stick nitride coating - improves tissue release upon removal
- May be repeatedly sterilized by autoclave - unused portions are not wasted

45mm x 45mm

TM4545 \$100 ea

(provided non-sterile)



## COLLAGEN WOUND DRESSINGS



MX62-200 \$155/box

HeliTAPE® (10 units/box)

Indications for use:

- ⇒ Protect the wound site
- ⇒ Repair of Schneiderian Membrane
- ⇒ Controls bleeding due to hemostatic nature of Collagen



MX62-202 \$125/box

HeliPLUG® (10units/box)

Indications for use:

- ⇒ Aids in the closure of extraction sites
- ⇒ Control bleeding in extraction sites
- ⇒ Controls bleeding in biopsy sites



MX62-201 \$135/box

HeliCOTE® (10 units/box)

Indications for use:

- ⇒ Palatal donor sites
- ⇒ Mucosal flaps



# BONE FIXATION

Membrane Fixation Kit # PFMK20	\$997
Bone Tenting Kit # PFTK12	\$997
Bone Fixation Kit # PFBK12	\$1100

## Features and Benefits

- Ideal for both membrane Fixation (Screw Tacks) as well as Block Fixation (Self-Tapping Screws/Tenting Screws)
- No pilot hole required
- Made of high-grade titanium alloy to increase strength and prevent breakage
- Low-profile head
- Biocompatible
- CT scan and MRI compatible
- Cruciform Driver Blade fits securely into the head of the screw



## 1.5mm Self-Drilling Tenting Screws

8mm # PFB8-5 \$150 (5/pkg)  
10mm # PFB10-5 \$150 (5/pkg)  
12mm # PFB12-5 \$150 (5/pkg)  
14mm # PFB14-5 \$150 (5/pkg)



## 1.5mm Self-Tapping Fixation Screws

3mm # PFT3-5 \$150 (5/pkg)  
4mm # PFT4-5 \$150 (5/pkg)  
5mm # PFT5-5 \$150 (5/pkg)



## 1.5mm Self-Drilling Fixation Screws

3mm # PFT3-5 \$150 (5/pkg)



Call to Order T 877.266.3360

**Surgical**  
*Solutions USA*

# MINERALIZED (ALLOGRAFT) HUMAN BONE

*Osteokor - The Gold Standard in Oral Bone Regenerative Therapy*

- When clinician requires a graft with the hydroxyapatite component of autologous bone
- Applicable in cases where a scaffold and longer resorption is required
- Can be used alone or with mixture of autogenous bone in order to increase the osteoinductive properties of the graft
- Completely remodels to patients own bone



Description	Unit	Part no.	Price
Osteokor Cortical DBM 250 - 1000µ	0.5cc	DIS-CD05	\$75
Osteokor Canc Allograft 250 - 1000µ	0.5cc	DIS-CA05	\$75
	1.0cc	DIS-CA1	\$96
	2.0cc	DIS-CA2	\$156
Osteokor Cort-Canc Allograft 250 - 1000µ	0.5cc	DIS-CC05	\$75
	1.0cc	DIS-CC1	\$96
	2.0cc	DIS-CC2	\$156
	5.0cc	DIS-CC5	\$321
	12 x 1cc	DIS-RDGE	\$999
	8(1cc) + 2 (5cc)	DIS-SINUS	\$1,299

Call to Order T 877.266.3360

**Surgical**  
*Solutions USA*



# ALLOGRAFT PARTICULATE



Description	Unit	Price
Raptos Allograft Particles (Syringe) (Cortical, Cancellous, Blend or Demineralized)	0.25cc	\$31
	0.5cc	\$49
	1.0cc	\$71

When clinician requires a graft in a pre-filled syringe

- Applicable in cases where a scaffold and longer resorption is required
- Can be used alone or with mixture of autogenous bone in order to increase the osteoinductive properties of the graft
- Completely remodels to patients own bone
- Offers an **osteoconductive platform** for bone regeneration



# CYTOPLAST™ PTFE NEEDLE SIZING CHART

## COMMON APPLICATIONS

- ⇒ Non-wicking monofilament construction
- ⇒ Soft and comfortable for patients
- ⇒ Excellent handling and knot security
- ⇒ Little or no package memory
- ⇒ Biologically inert



## Benefits

- Non-resorbable medical grade PTFE
- Monofilament construction eliminates bacterial wicking
- Biologically inert & chemically non-reactive
- Not subject to weakening by tissue enzymes
- Excellent soft tissue response
- Soft; increased patient comfort
- Great handling, knot-tying & knot-holding characteristics

**NEW**

### CS051819

New 300 series stainless steel needle - especially for dental implant and bone grafting procedures.

Size: USP 3-0

Needle: 19 mm 3/8 Circle Reverse Cutting

12 per box

\$100

### CS0418

19 mm reverse cutting needle, which is popular for procedures where a longer needle is desired.

Size: USP 2-0

Needle: 19 mm 3/8 Circle Reverse Cutting

12 per box

\$100

**NEW**

### CS0518

Most popular size especially for dental implant and bone grafting procedures.

Size: USP 3-0

Needle: 16 mm 3/8 Circle Reverse Cutting

12 per box

\$100

### CS0618 RC

Most popular of the smaller CS-06 sutures, 16 mm reverse cutting needle. Often used for dental implant and bone grafting procedures.

Size: USP 4-0

Needle: 16 mm 3/8 Circle Reverse Cutting

12 per box

\$110

### CS0618 PERIO

13 mm taper point needle. Often used on soft tissue grafts and suturing of delicate tissues that require an atraumatic needle.

Size: USP 4-0

Needle: 13 mm 1/2 Circle Taper Point

12 per box

\$110

### CS0618 PREM

Offers over 50% longer cutting edges, giving needles a more slender, defined shape that greatly decreases the force applied to the needle during surgery.

Size: USP 4-0

Needle: 13 mm 3/8 Circle Premium Reverse Cutting

12 per box

\$110

\*\*\* Products shown are NOT actual size.

**NEW**

These sutures now available with black colored needles